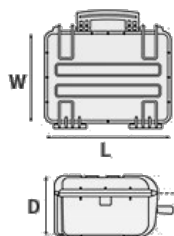


# Mod. 2712 B

COPOLYMER POLYPROPYLENE WATERPROOF CASE



Metric mm-Kg-C°



## INTERNAL DIMENSIONS

L Length	276 mm
W Width	200 mm
D Depth	120 mm
Lid	35 mm
Base	85 mm

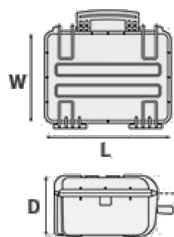
## EXTERNAL DIMENSIONS

L Length	305 mm
W Width	270 mm
D Depth	144 mm

## OTHER DATA

Weight empty	1.62 Kg
Weight with foam	1.83 Kg
Weight with custom foam	0 Kg
Volume	6.60 lt
Buoyancy	4.20 Kg/max
Operating temperature	°C min -33 / max +90

Imperial in-lbs-F°



## INTERNAL DIMENSIONS

L Length	10 7/8 in
W Width	7 7/8 in
D Depth	4 3/4 in
Lid	1 3/8 in
Base	3 3/8 in

## EXTERNAL DIMENSIONS

L Length	12 in
W Width	10 5/8 in
D Depth	5 11/16 in

## OTHER DATA

Weight empty	3.57 lbs
Weight with foam	4.03 lbs
Weight with custom foam	0 lbs
Volume	1.58 gal
Buoyancy	9.25 lbs/max
Operating temperature	°F min -27.4 / max +194

# Mod. 2712 B

## ACCESSORIES



### **PADDED BAG WITH ADJUSTABLE DIVIDERS**

Highly durable padded bag with rubber coated handle and robust zipper with lockable Velcro pull zipper. Practical external front pouch for documents, removable shoulder strap and rubber feet on the bottom to grant better grip. Internal adjustable padded dividers for flexible configuration.

Ideal to protect sensitive equipment (ie electronic, photographic, broadcasting, medical etc.).

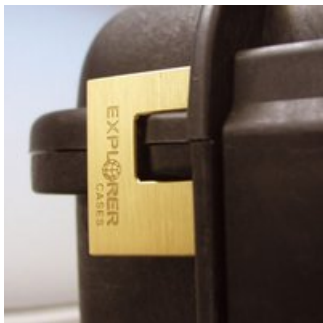
Suitable for case 2712.

Color: black.



### **PATENTED COMBINATION PADLOCK**

Designed to fit snug to the Explorer case mould so as not to swing out



### **PATENTED HEAVY DUTY BRASS PADLOCK WITH KEYS**

Designed to fit snug to the Explorer case mould so as not to swing out



### **TSA APPROVED PADLOCK WITH COMBINATION**

The new TSA approved padlocks allow tsa® airport security agents to open the case without destroying the lock. TSA agents are trained to recognize the travel sentry certified logo and should not break the case lock.

### FOAM SET FOR CASE 2712

Layers of pre cubed foam for the bottom and convoluted foam for the lid



### BLIND INSERT

Kit includes 6 pcs.

Whenever the slots are not going to be used for in-built applications, those can be closed by blind inserts that will give the case a better and finished interior look.



### METAL BRACKET

Kit includes 6 pcs.

All models (except for the 1908) are internally equipped with specific slots, to apply the optional metal or plastic brackets which provide either a panel's fixing points or a fix mechanical joint inside the case, to build more complete applications. This way the case becomes a real workstation, rather than just a carrying container. As the panel mounting brackets are mechanically fixed by screws, they can be removed when necessary. The dedicated screws allow the case to remain waterproof, and help the panels to be removed easily and quickly





#### **PLASTIC BRACKET**

Kit includes 6 pcs.

All models (except for the 1908) are internally equipped with specific slots, to apply the optional metal or plastic brackets which provide either a panel's fixing points or a fix mechanical joint inside the case, to build more complete applications. This way the case becomes a real workstation, rather than just a carrying container. As the panel mounting brackets are mechanically fixed by screws, they can be removed when necessary. The dedicated screws allow the case to remain waterproof, and help the panels to be removed easily and quickly



#### **CONVOLUTED FOAM SET FOR CASE 2712 AND 2717**

(includes 2 pcs.)



#### **LID PANEL WITH ORGANIZED POUCHES**

Practical and robust lid panel with pouches, ideal for small accessories and documents.

Suitable for cases 2712 and 2717.

Color: black.



#### **PANEL RING FOR CASE 2712 AND 2717**

Includes Metric system fixing screws.

User friendly panel frames, they can be used to fix several kind of panels, from plastic to aluminum ones. Equipped with an additional gasket (which will be squeezed in between the panel and the frame) they can provide the case with a perfect instrumentation surface and a further humidity and dust resistance when the case is used in the field.

Completely removable, resistant and light, these panel rings help to transform the Explorer cases into practical workstations.



#### **PANEL RING FOR CASE 2712 AND 2717**

Includes Imperial system fixing screws.

User friendly panel frames, they can be used to fix several kind of panels, from plastic to aluminum ones. Equipped with an additional gasket (which will be squeezed in between the panel and the frame) they can provide the case with a perfect instrumentation surface and a further humidity and dust resistance when the case is used in the field. Completely removable, resistant and light, these panel rings help to transform the Explorer cases into practical workstations.



#### **PROTECTIVE SLEEVE FOR PC 13"-13.3"**

Protective padded notebook sleeve. Protects the laptop from shocks and scratches.



#### **PADDED DIVIDER FOR 2712**

Padded dividers with internal adjustable partitions. Ideal to protect and transport any kind of sensitive equipment. Thanks to their modularity, they can be easily combined.

## **FEATURES**





Internal slots for optional panel mounting brackets or panel mounting rings



(Art. NEOSEAL + nr. art.)



The internal stop ring prevents valve from being completely extracted (Art. PURGEVALVE.B)



(Art. LABELCOVER + nr. art.)





By releasing the back screw, lid becomes set to slide-off when opened at 70°



(in certain models)