

Circularly polarized panel antenna for 868 MHz

Antena de painel circularmente polarizada para 868 MHz

Circularly polarized panel antenna for RFID and other applications.

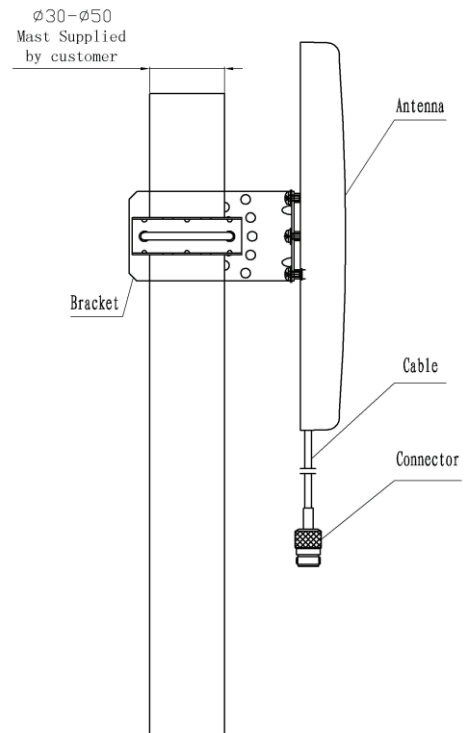
The inclination of the antenna can be adjusted Circularly polarized panel antenna for RFID and other applications.

Antena de painel circularmente polarizada para RFID e outras aplicacoes.

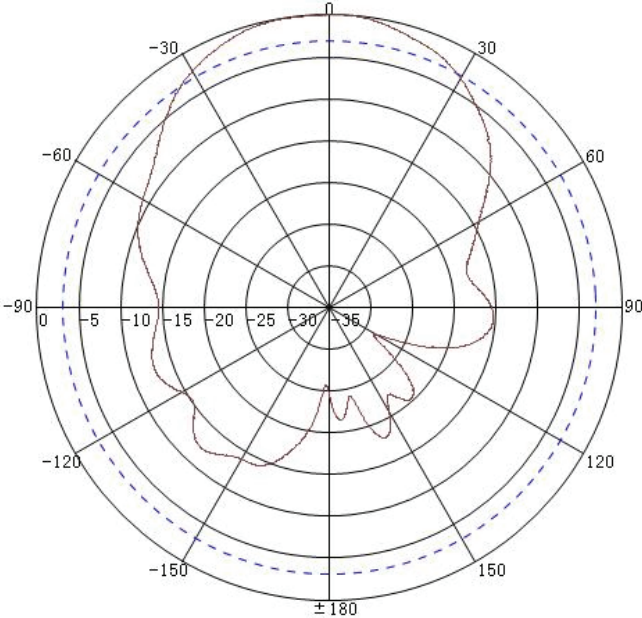
A inclinacao da antena pode ser ajustada Antena de painel circularmente polarizada para RFID e outras aplicacoes.

Specifications

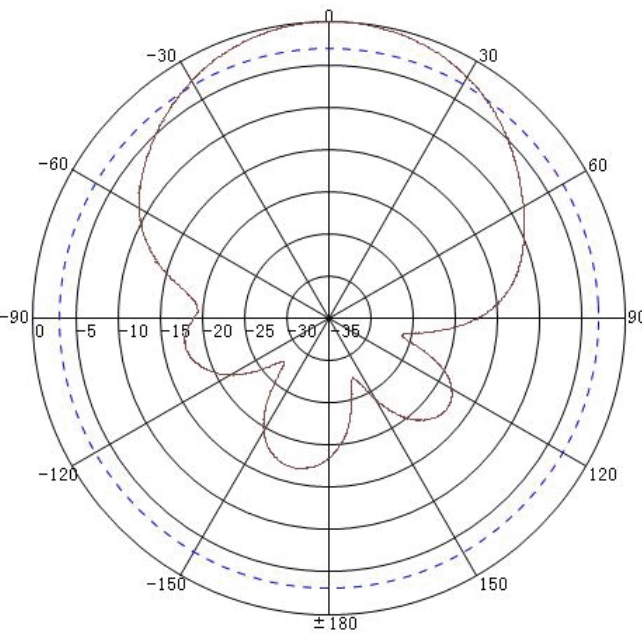
Model	18755
Freq.Range-MHz	865 to 869
Bandwidth-MHz	4
Gain-dBi	9
Ver.Beamwidth-°	70
Hor.Beamwidth-°	65
F/B Ratio-dB	≥21
VSWR	≤1.4
Impedance-Ω	50
Polarization	RHCP
Max.Power-W	100
Connector	1m cable with N female
Dimensions-mm	260×260×35
Weight-Kg	0.75



Pattern E:

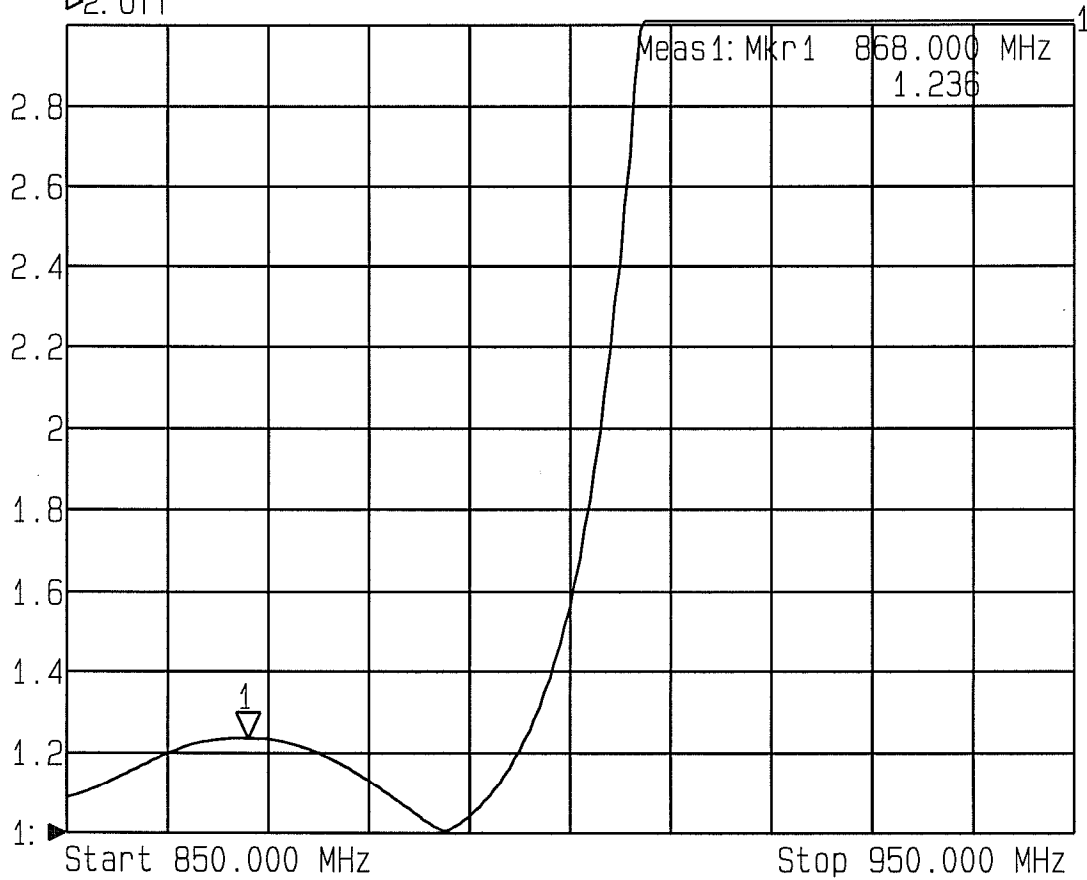


Pattern H:



VSWR / return loss: see next 2 pages!

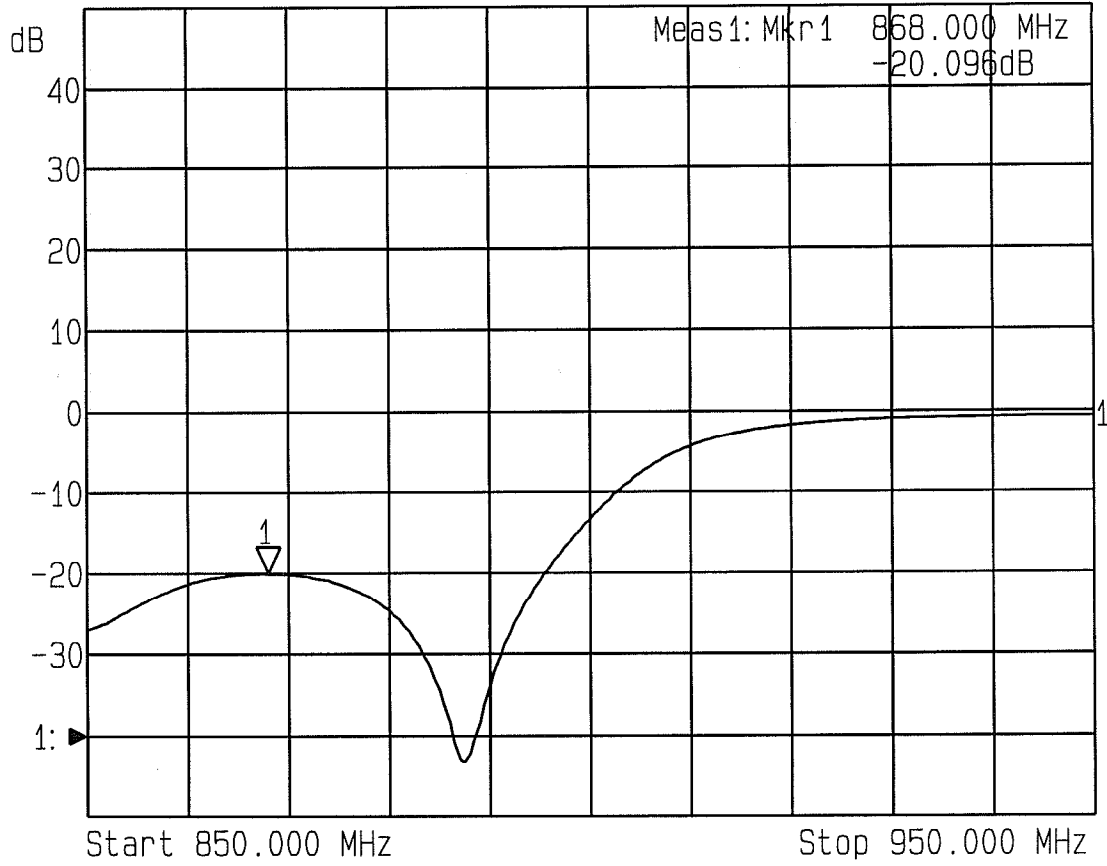
▶1: Reflection SWR 0.2 / Ref 1.000
▶2: Off



1: Mkr (MHz)	2: Mkr (MHz)	dB
1> 868.0000	1.236	

▶1: Reflection
▶2: Off

Log Mag 10.0 dB/ Ref -40.00 dB



1: Mkr (MHz)	dB	2: Mkr (MHz)	dB
1> 868.0000	-20.096		